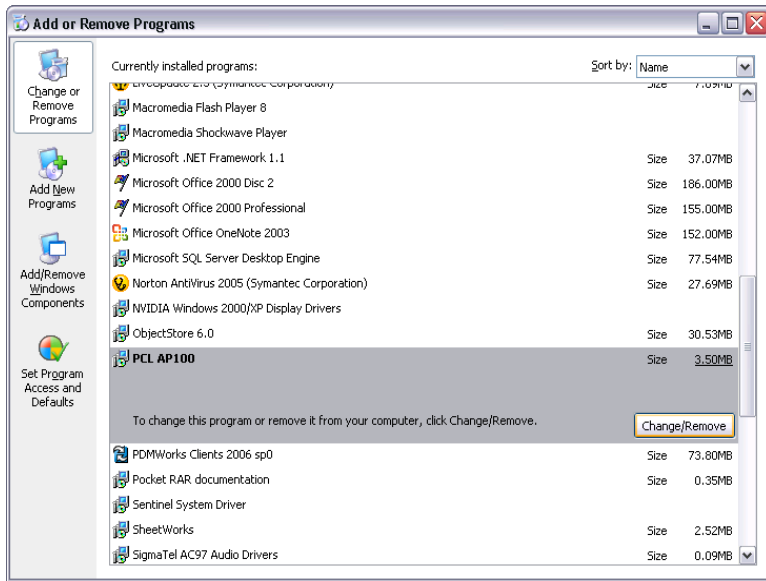


Procedure To Uninstall AP100 Software



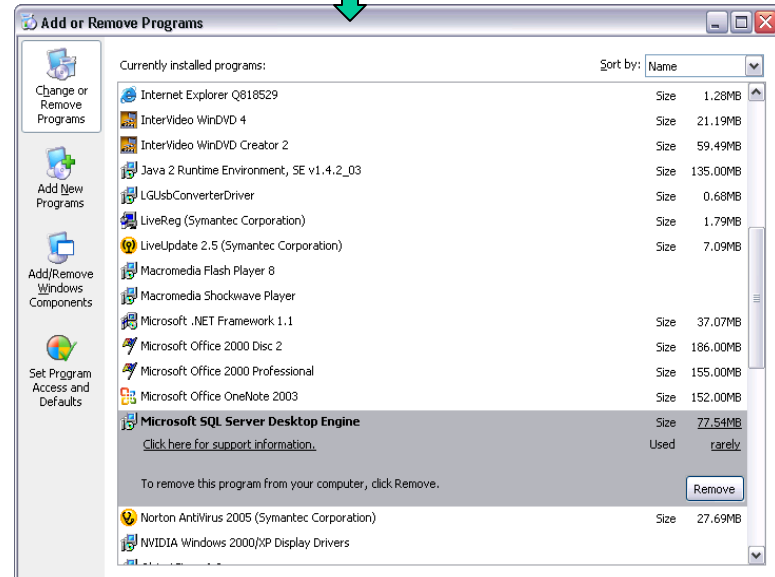
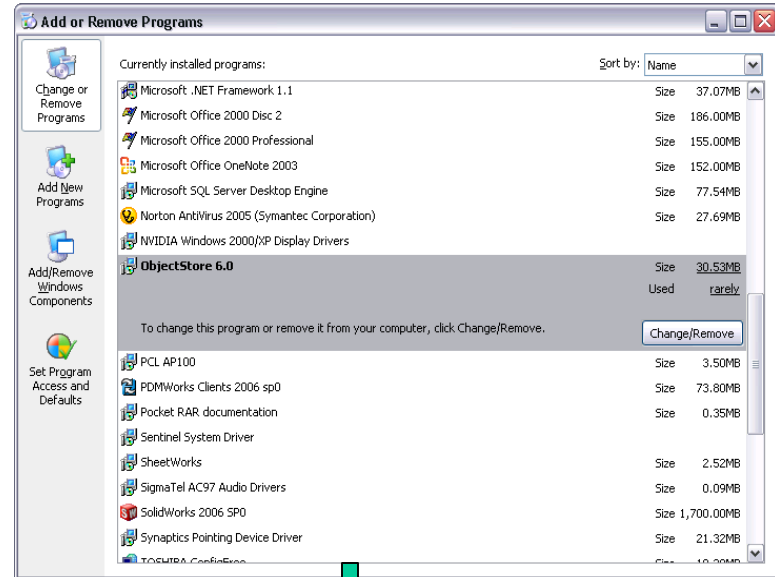
Log on Windows with the account of Administrator
Click Start – Settings– Control Panel– Add Remove Programs

Step –1 : Remove PCL AP100



Step –3 : Remove Microsoft SQL Server Desktop Engine

Step –2 : Remove Objectstore 6.0



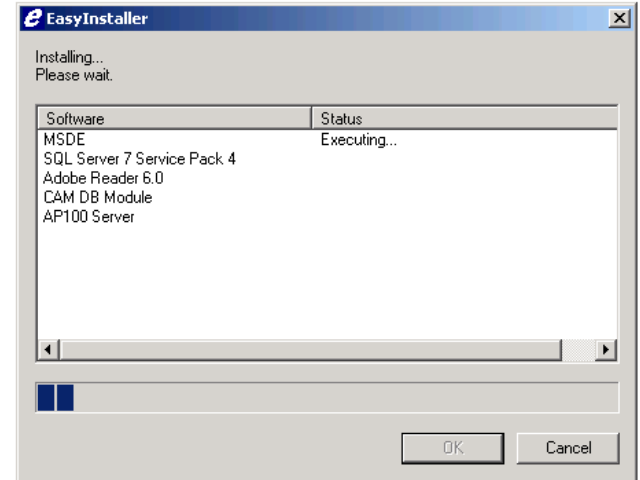
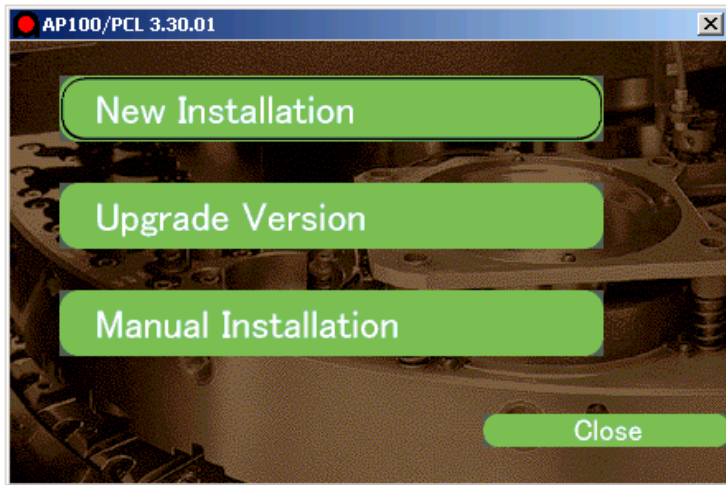
Procedure To Install AP100 Software



Log on Windows with the account of Administrator

Execute the file InstallLauncher\Install.exe in PCL/AP100 CD-ROM.

Press [New Installation]



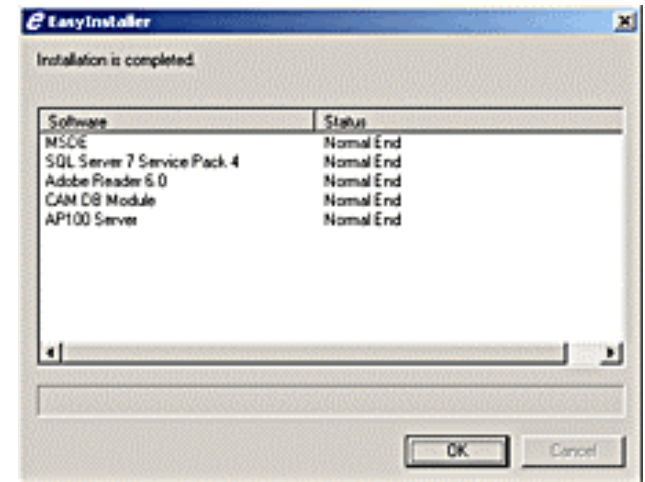
Please operate it according to a dialog.

Now it starts installing software.

Please wait awhile.



Installations of all software are completed, and their results are displayed.



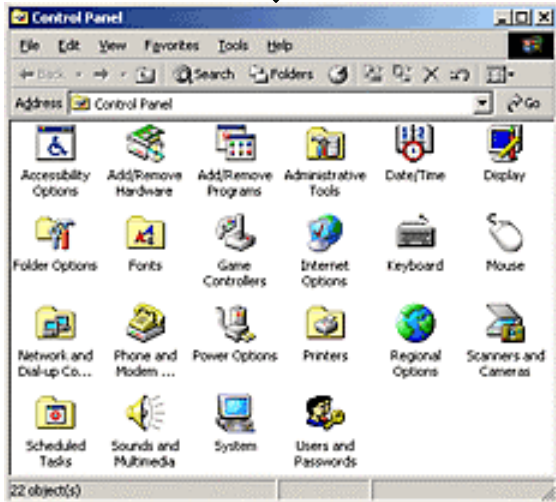
NC Data Input/Output Setting



Log on Windows with the account of Administrator.

Select [Control Panel] in the following sequence from the button Start on a taskbar. [Start] -> [Setting] -> [Control Panel]

Select the icon [Management Tool] in the control panel.



Select [Network DDE DSDM] from a list in the window [Service], and then select [Properties] from [Operation] in the main menu.

Select [Automatic] from the combo box [Startup Type].

Press [Start] to start Network DDE DSDM services.

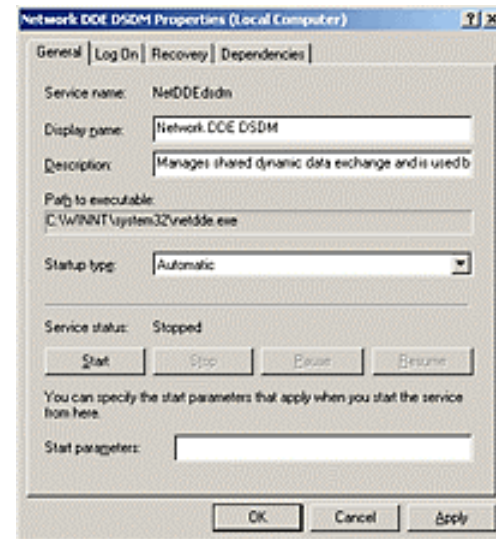
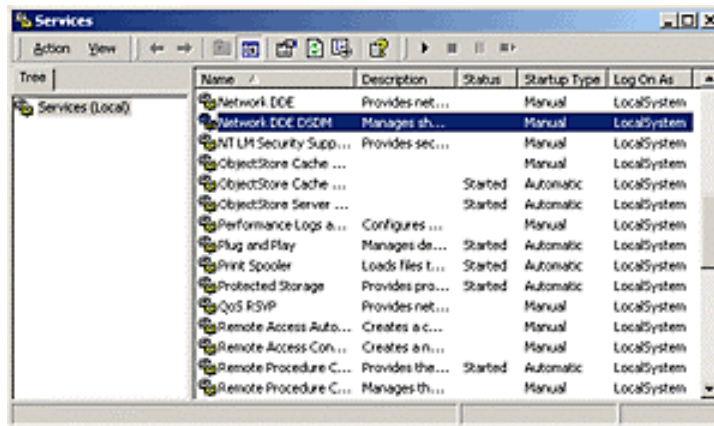
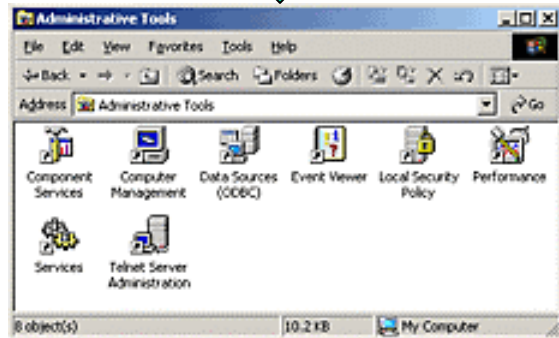
Press OK to close a dialog box.

Execute the file \Aasis1v11\Bin\SddIoNdde.exe in the drive where PCL or AP100 is installed.

Then, reboot a computer.

Now, NC Data Input/Output setting has been completed.

Select the icon [Service] in the Management Tool.



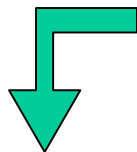
User Environment Setting



Log on Windows with the user account for executing PCL or AP100 (the account is normally same name as computer name).

If some applications of PCL or AP100 are activated, close all of them.

Click on START– Run .

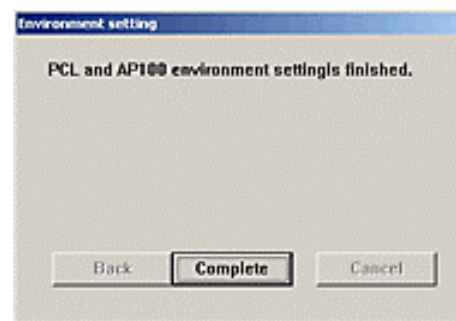
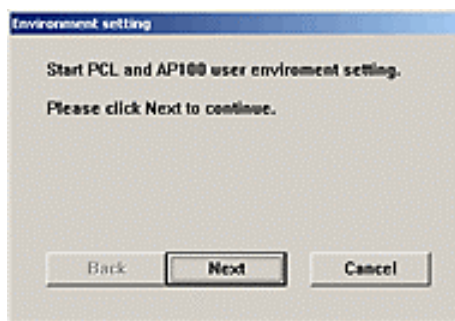
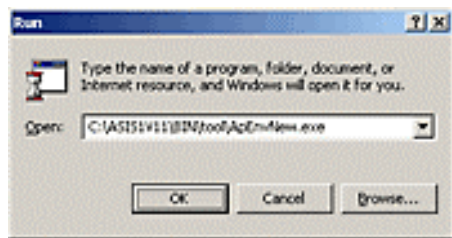


Enter
C:\Asis1v11\Bin\Tool\ApEnv
New.exe ("C:" means name of
drive where PCL/AP100 is to
be installed.) in the dialog box
[Specify file name and
execute it.], and press OK

The dialog of User Environment Setting
Program is displayed.
Press NEXT.

The dialog to tell the completion of
environment setting is displayed.
Press Complete.

Now, User Environment setting has been
completed.



Register License



Insert a FD, where a license file is already saved, into a drive.

Select [Register] in the following sequence from start menu on desktop, and start up License Registration Tool.

[Start] -> [Program] -> [ASIS100PCL] -> [License Management] -> [Register]

Follow the indication in the display [License Registration Tool], and register license of PCL/AP100 onto computer.

Select [Monitor License] in the following sequence from start menu on desktop, and start up License Monitor Tool.

[Start] -> [Program] -> [Startup] -> [Monitor License]

